

The image features a top-down view of several olive branches with elongated, silvery-green leaves scattered across a plain, light-colored surface. The branches are arranged in a way that frames the central text, with some leaves falling off and lying separately. The lighting is soft and even, highlighting the texture of the leaves and the natural color variations from vibrant green to a silvery-grey on the underside.

HAMMOND GROVE

BY QUBE



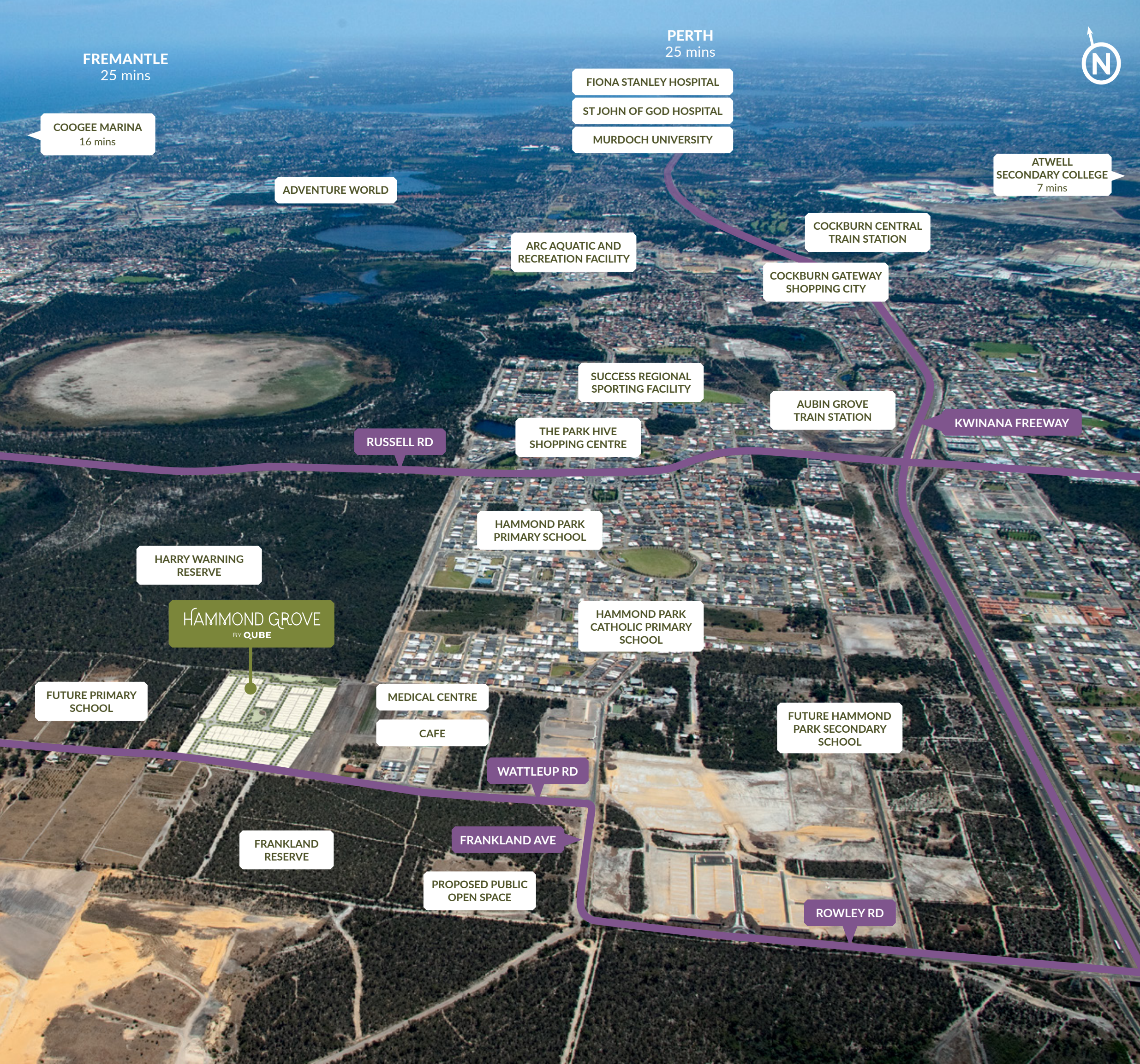
Something's growing in Hammond Park



Set on a premium piece of land with a rich agricultural history, Hammond Grove combines a scenic past with a bright future.

As a truly niche development in the heart of Hammond Park, the estate offers a unique opportunity to live close to shops and schools while enjoying your own secluded corner of the world.

Designed with a clear vision for the future, Hammond Grove will become a place where you can taste, share and enjoy life with neighbours and friends.



Live and grow amongst natural surrounds



Hammond Grove Estate is an intimate new land estate where your family can live and grow amongst natural surrounds, just 25 minutes south of Perth and Fremantle.

Located in the popular suburb of Hammond Park, the estate is only minutes away from an established local shopping centre, schools, medical facilities, parks, natural bushland and nature reserves.

And when you need to get out and about, the nearby Kwinana Freeway provides quick access to the Aubin Grove Train Station, Cockburn Central Train Station, Cockburn Gateway Shopping City, Glen Iris Golf Course and more.



Enjoy a balance of tranquillity and convenience



At Hammond Grove, you can live a balanced lifestyle surrounded by the tranquillity of nature and the conveniences of modern living.

As the communal gardens, play areas and green open spaces begin to take shape, so too does a shared vision for the future.

With a variety of lot sizes and orientations to choose from at Hammond Grove, you will find the perfect homesite to suit your lifestyle and budget.

Come home to an abundance of local amenities



As a resident of Hammond Grove, you will be part of a friendly, wholesome neighbourhood designed to complement the beautiful natural setting.

Just moments away from your home, Hammond Park provides an abundance of established amenities and facilities, including a local shopping centre, medical services, parks and a choice of private or state schools.

And further afield, you are within easy reach of Cockburn Gateway Shopping City, Adventure World, Murdoch University, Fiona Stanley Hospital, Glen Iris Golf Course and Beeliar Regional Park featuring picturesque wetlands, picnic areas and walking trails.





QUBE

After 20 years of success, we're built to be recommended.

At QUBE, we build more than land, apartment
and commercial property developments.

We build long-term relationships. We build trust and respect.

As a proudly Western Australian company, we're committed
to delivering our vision for a brighter future.

We're committed to high standards. We're committed to quality.

Backed by 20 years of experience and success, our
developments are built to stand the test of time.

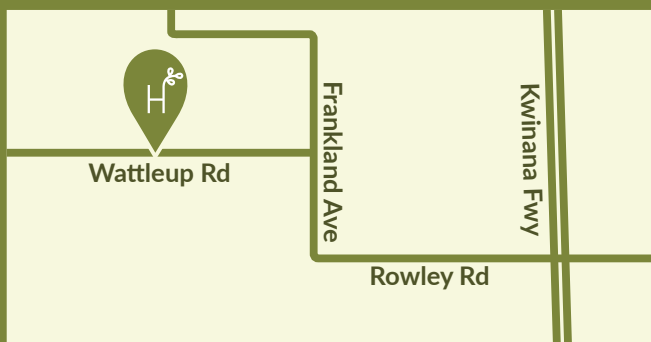
Built to be innovative. Built to be recommended.



Find your place in the grove.

HAMMOND GROVE

BY **QUBE**



456 Wattleup Road, Hammond Park

Opening Times

Sat & Sun 1-5pm, Mon & Wed 2-5pm

Carl McNeill Estate Manager

(08) 9386 8080 | 0439 994 775 | carl@qubeproperty.com.au

hammondgroveestate.com.au

The information and illustrations in this brochure are indicative only and are subject to change. QUBE Property Group Pty Ltd and companies related to it and its Agents, do not warrant the accuracy of the information or illustrations and do not accept any liability for any error or discrepancy in that information. The information and illustrations displayed in this brochure will not form part of any contract. Artist's impressions are subject to change.